

Gwozdziec Bimah Project

Handhouse Studio
and
Mass College of Art
Spring 2006



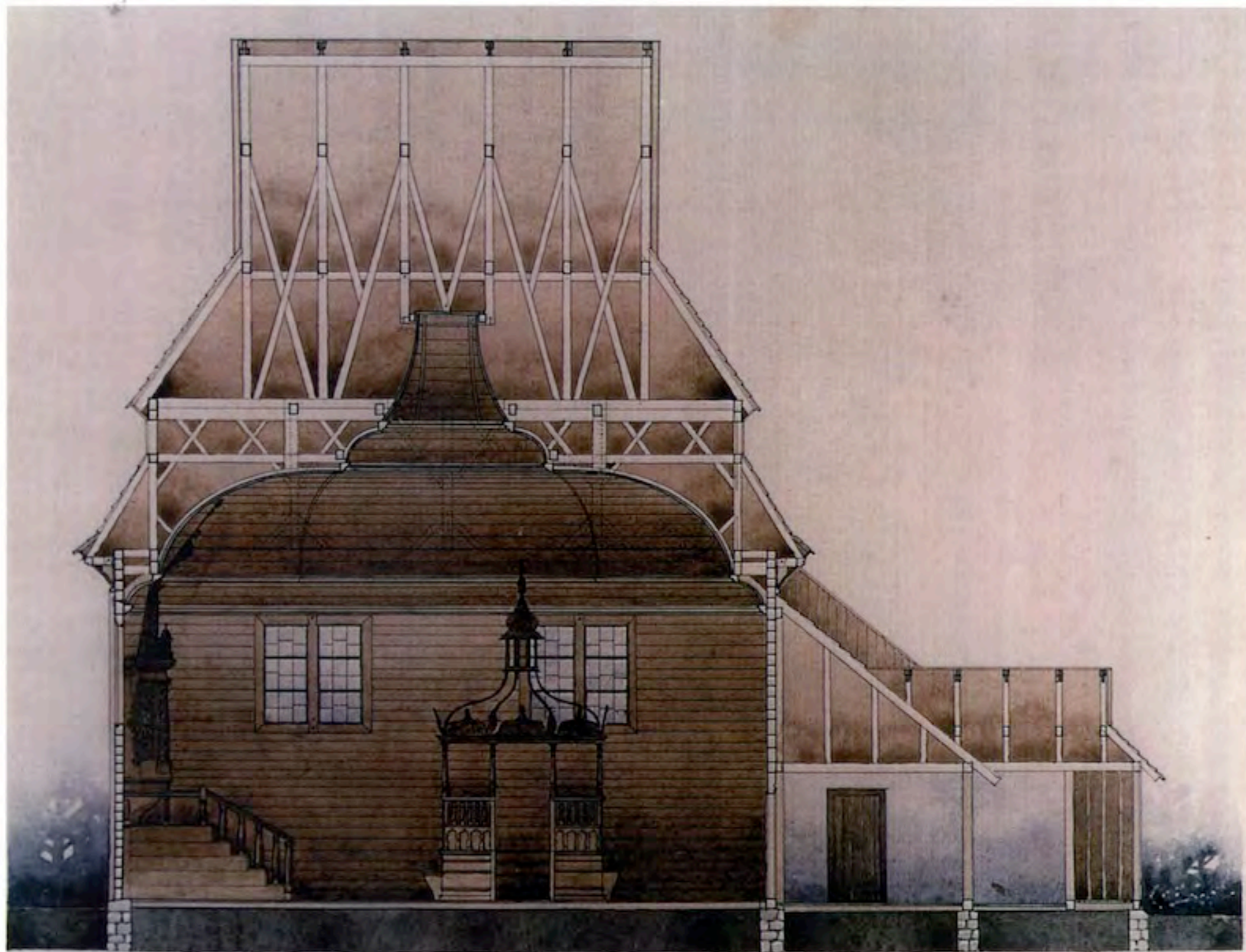
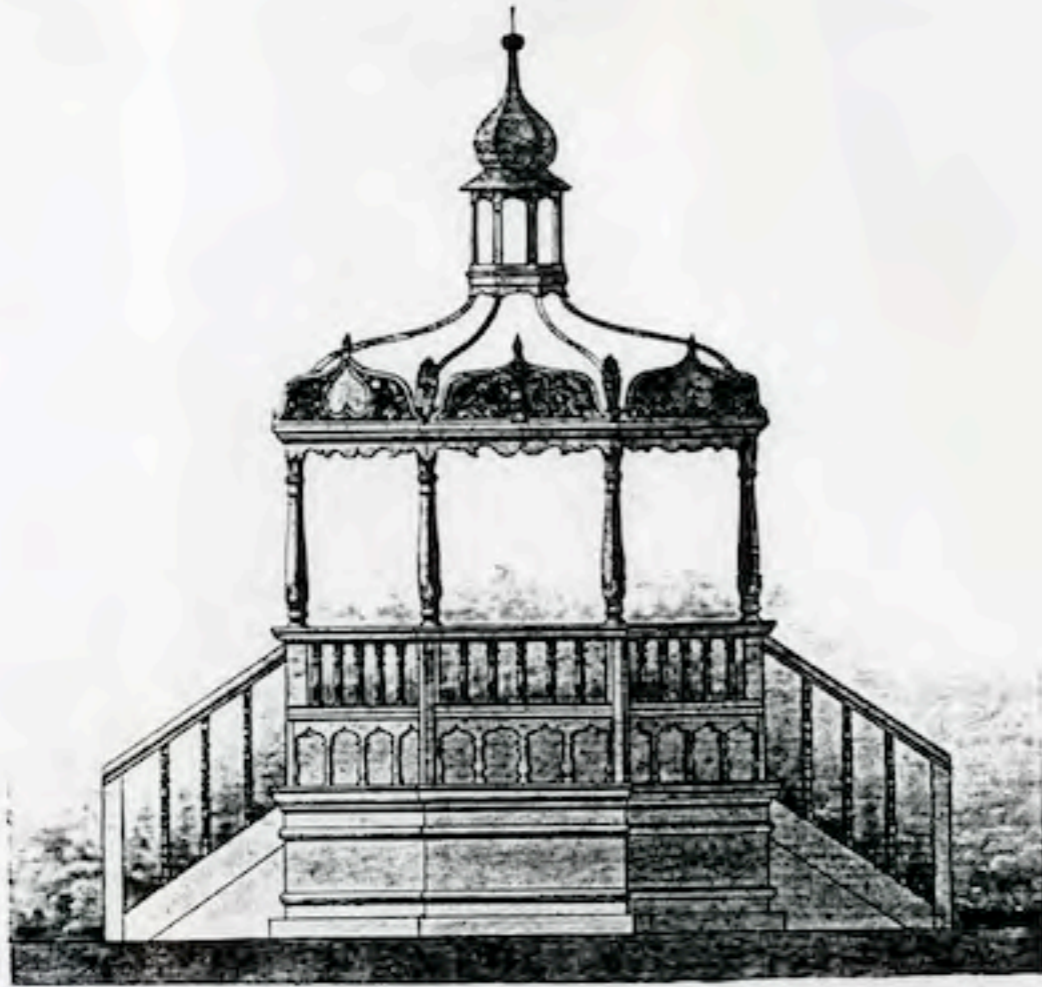
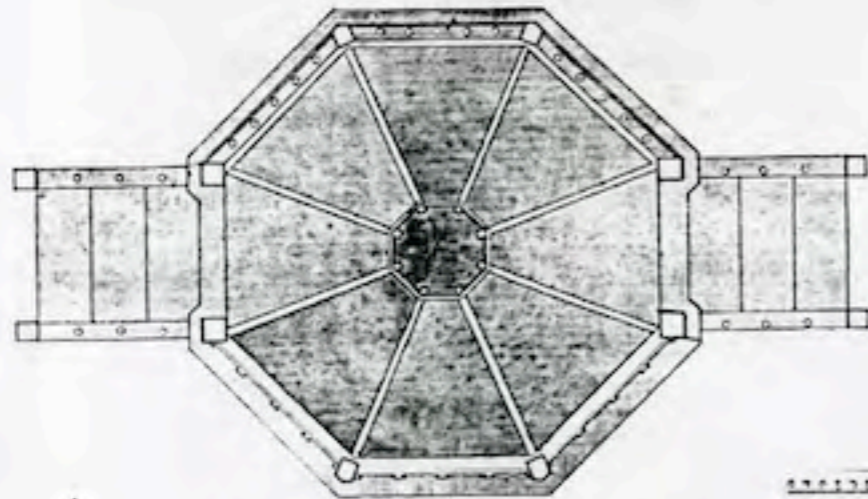


PLATE 2. Section, Looking South, Gwoździec Synagogue. (Courtesy of the Tel Aviv Museum of Art.)

BIMA.

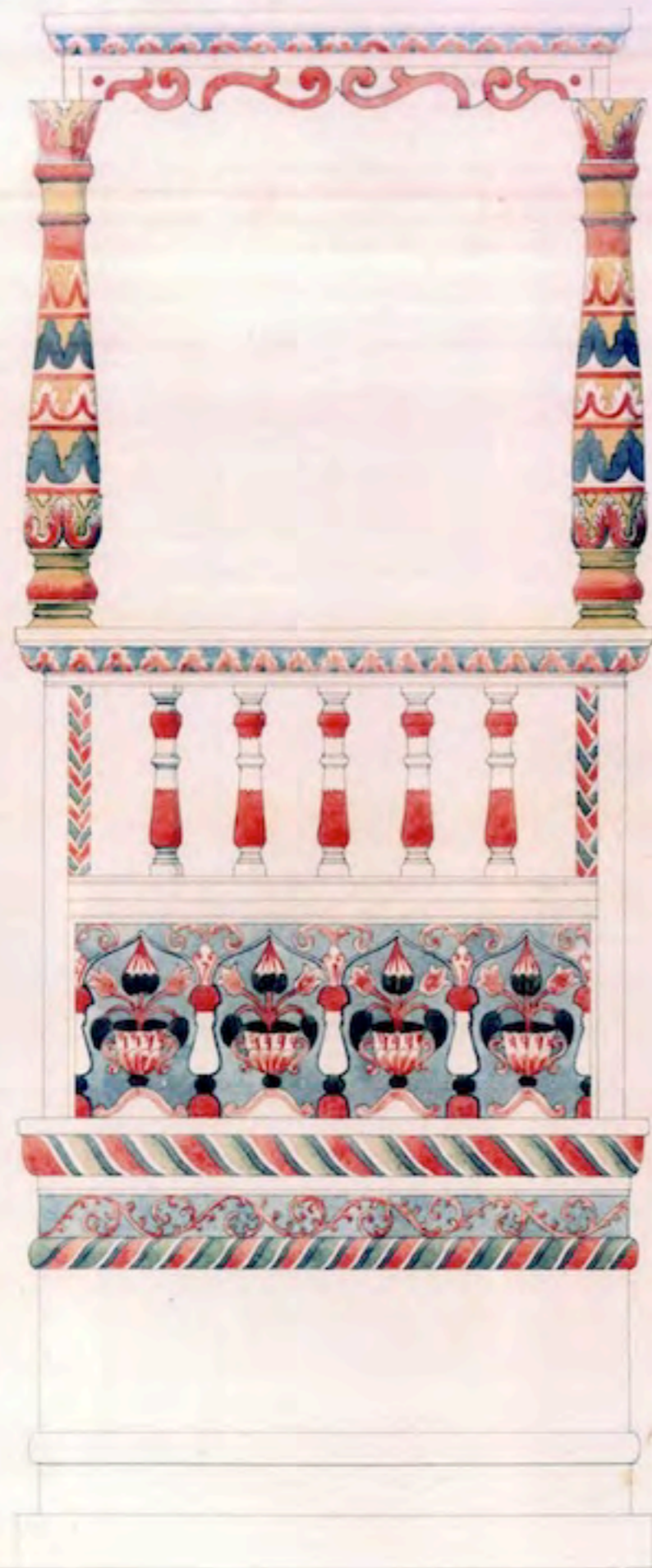


DRAVFSICHT.



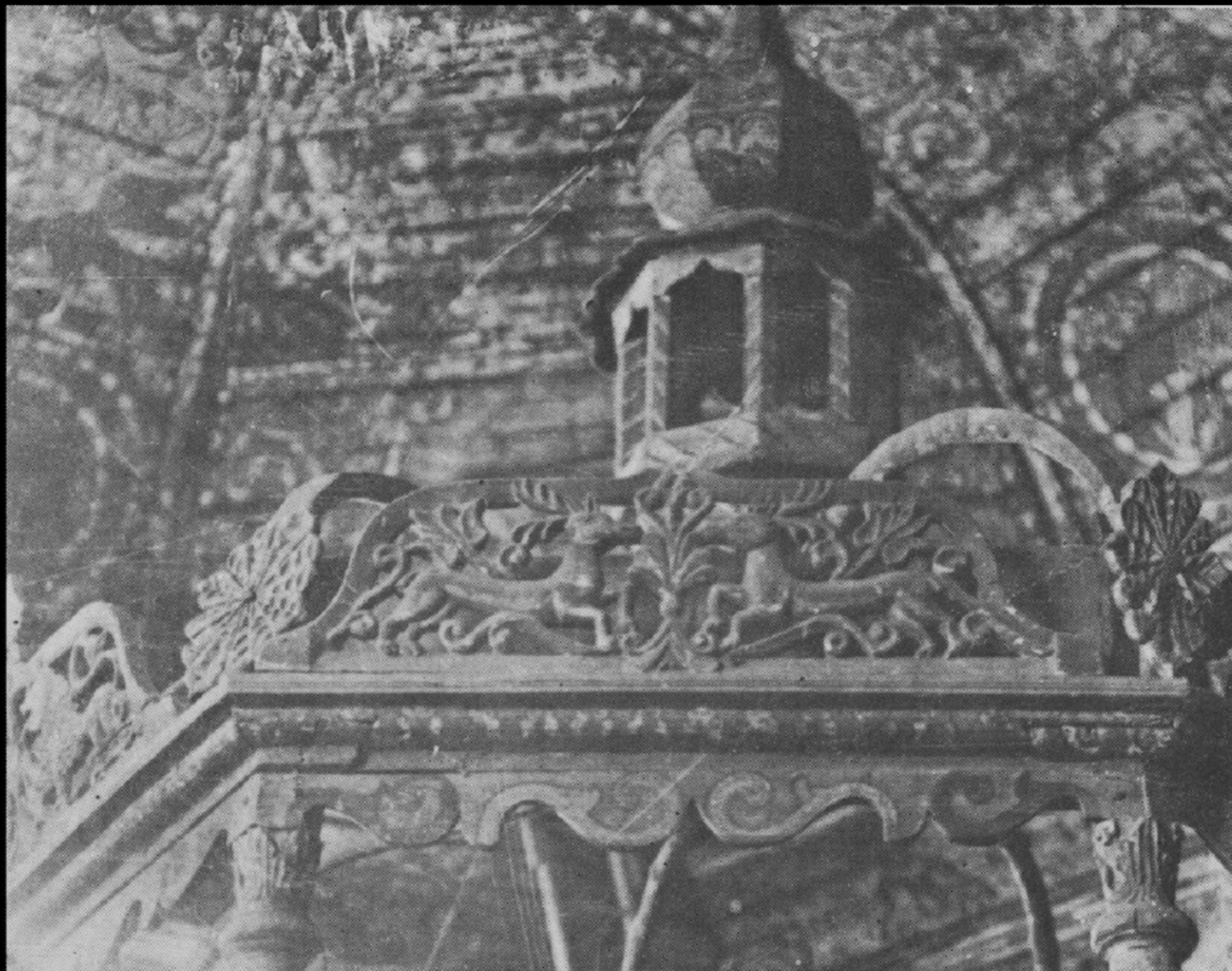
BRUNNEN
König (1810) etc.

Existing Archival Drawings

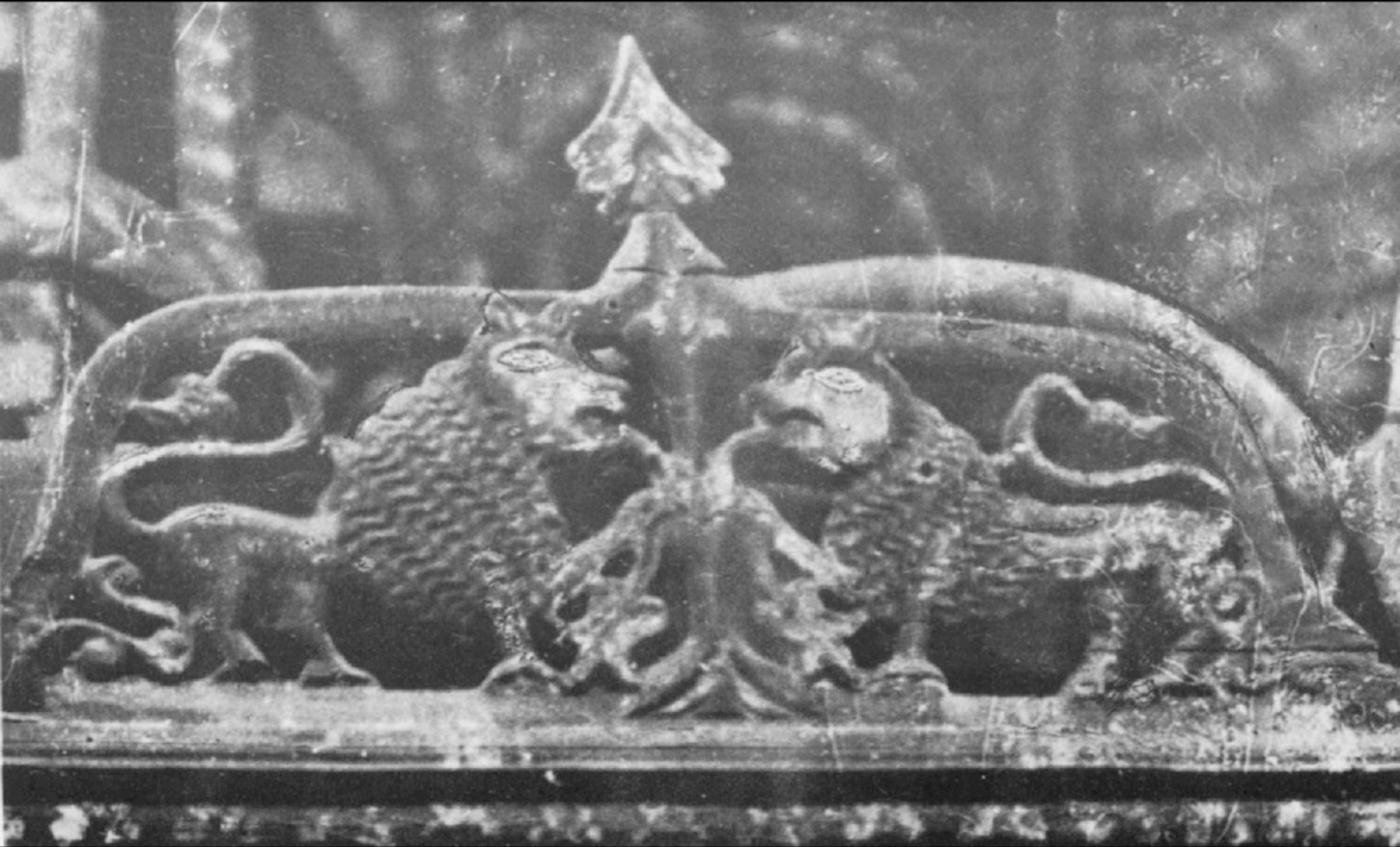


Existing Archival Drawings

Existing Archival Photographs



Existing Archival Photographs



Mass College of Art Spring, 2006



Full scale replica of a section of the Gwozdziec Bimah constructed at Mass College of Art - Culture and Technology coursework.

The Handhouse Studio Gwozdziec Bimah Workshop



May 27 - July 4, 2006

Construction
and
assembly
drawings

by Nat Crosby



Making the 8 carved columns



Turning the columns on a lathe



Turning spindles using a traditional spring pole lathe



Laying out and
carving the floral
elements





Making the 8 carved panels





Studying archival
photographs and
making tracings and
templates





And many hours of careful carving.

Laying out and carving the floral details for the crown.



Constructing the timber frame base



The 24" raised bimah platform.





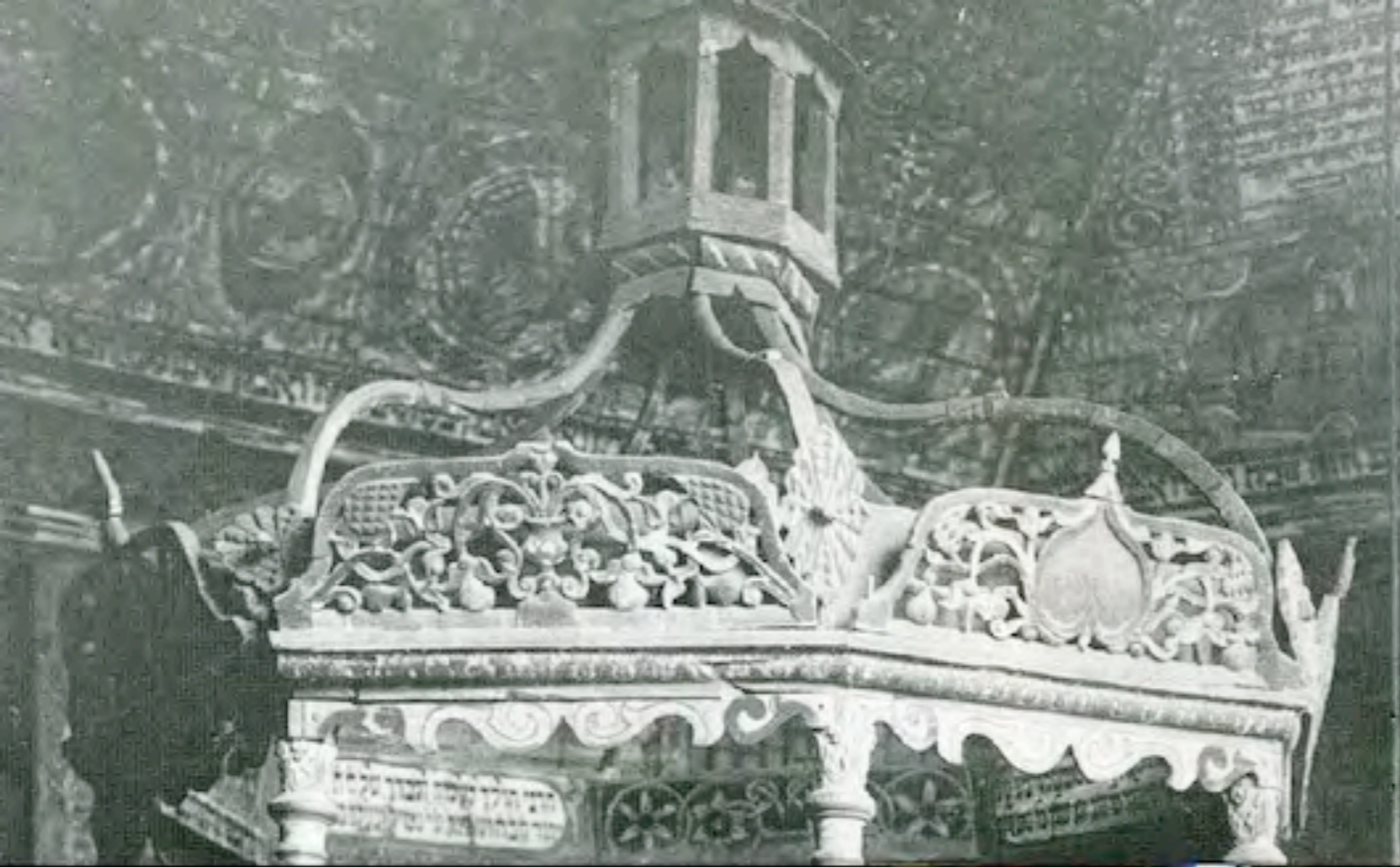
Making and
assembling
the railings
and panels



Group picture of the team
on June 4, 2006 ...

the last day of the official
workshop.





Making the Crown and Lantern





Steam bending and assembling the 8 curved lantern supports.







First assembly of the bimah - July 4, 2006

















Gwozdziec Bimah
1914

Gwozdziec Bimah
July 2006

